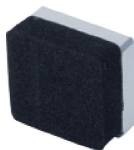


## SOFT PROBES FOR HUMAN BODY



ISF-DFAT2-C1



ISF-DFAT2-C2



ISF-DFAT2-C3

- To measure muscle force
- For press test with digital force gauges (code **ISF-1DF** and **ISF-DF**) and force gauge handles (code **ISF-DFAT1**)
- Maximum range 1000N



ISF-DFAT2-C4

Code	Specification
ISF-DFAT2-C1	90×25mm; M6 (rectangle)
ISF-DFAT2-C2	25×25mm; M6 (square)
ISF-DFAT2-C3	90×25mm, R80mm; M6 (arc-shaped)
ISF-DFAT2-C4	M6



application