

HANDHELD 3D SCANNERS



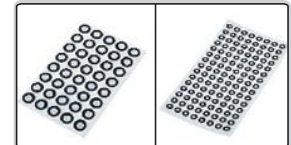
scan indicator



calibration plate (included)



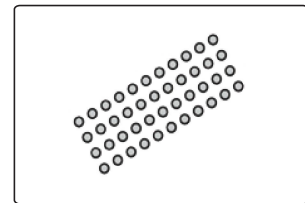
multi-function keys



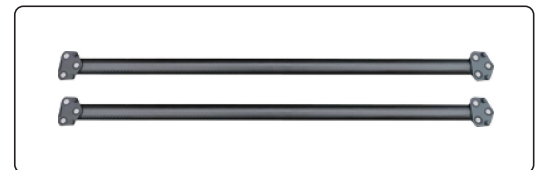
Φ3mm and Φ6mm marks (included)



magnetic target ball (optional)



magnetic target (optional)



photogrammetric rulers (optional)

- Three scanning modes to suit different situations
- AI algorithm module, greatly improve the scanning effect
- Highly efficient scanning with ultra-fast measuring speeds
- Metrology-grade measuring accuracy
- Optional photogrammetry function

SPECIFICATION

Code		LSM-L340	LSM-L560
Scanning mode	high-speed scanning	26 cross blue laser lines	50 cross blue laser lines
	precision scanning	7 parallel blue laser lines	7 parallel blue laser lines
	deep hole scanning	1 blue laser line	1 blue laser line
Maximum scanning speed		5400000 measurements/s	7100000 measurements/s
Volume accuracy		0.015mm+0.035mm/m (standard configuration) 0.015mm+0.025mm/m (required optional photogrammetric rulers)	
Laser class		CLASS II (eye-safe)	
Maximum resolution		0.01mm	
Depth of field		550mm	
Reference distance		300mm (high-speed scanning, deep hole scanning), 200mm (precision scanning)	
Maximum scanning field		650mm×550mm	
Output format		stl, ply, obj, txt	
Operating temperature		-10°C~40°C	
Interface		USB3.0	
Power supply		100~240V, 50/60Hz	
Dimension (L×W×H)		335×140×70mm	



high-speed scanning: 26 cross blue laser lines (Computer is **optional**)



precision scanning: 7 parallel blue laser lines (Computer is **optional**)



deep hole scanning: 1 blue laser line (Computer is **optional**)

STANDARD DELIVERY

Main unit	1set
Scanning software	1set
Φ3mm mark	1000pcs
Φ6mm mark	4000pcs
Calibration plate	1set

OPTIONAL ACCESSORY

3D measuring software	LSM-L-SW
Photogrammetric rulers	LSM-L-340-RULER
Φ3mm mark (5000pcs)	LSM-L-RM3
Φ6mm mark (5000pcs)	LSM-L-RM6
Φ3mm magnetic target (500pcs)	LSM-L-MRM3
Φ6mm magnetic target (500pcs)	LSM-L-MRM6
Φ6mm magnetic target ball (10pcs)	LSM-L-MRB6
Φ12mm magnetic target ball (5pcs)	LSM-L-MRB12
Computer	customized according to measuring requirements

SCANNING SOFTWARE (INCLUDED)

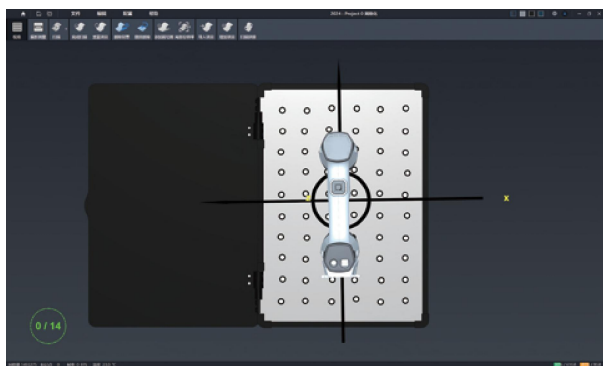
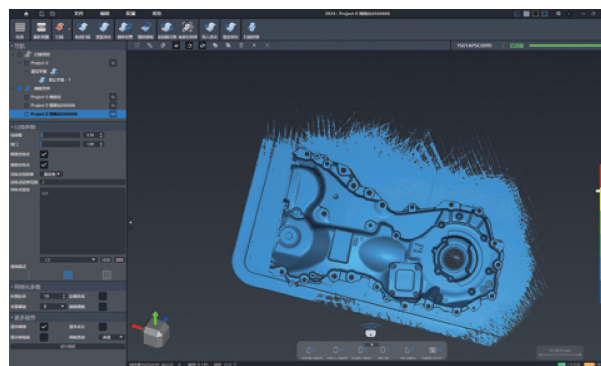
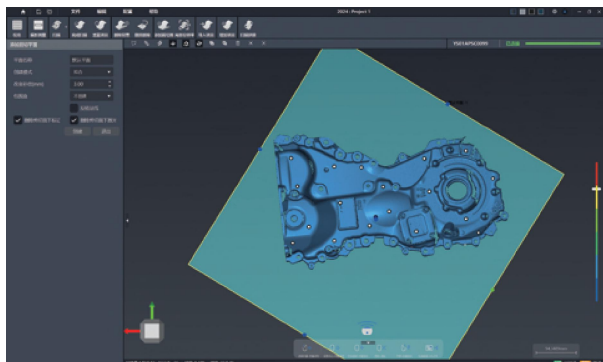


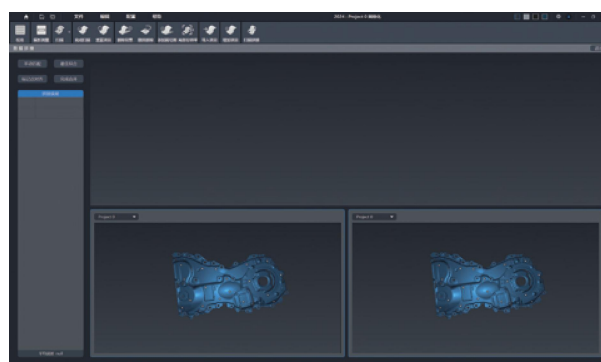
image-guide calibration



point cloud meshing

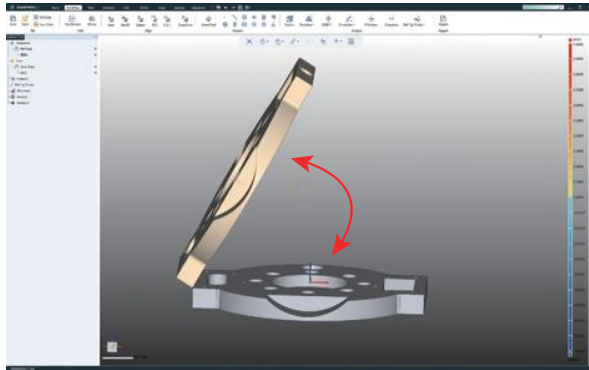


invalid area removal

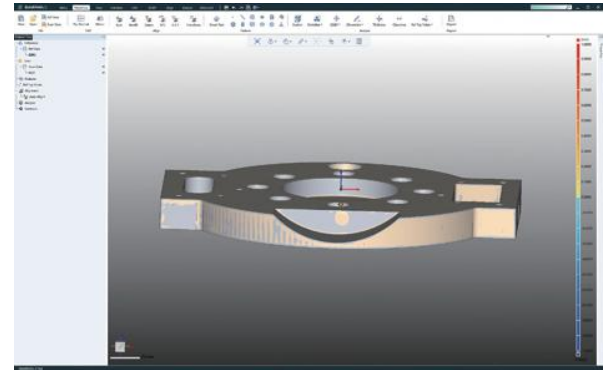


scanning splicing

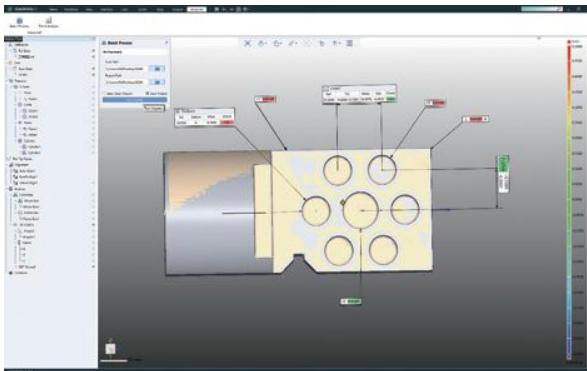
3D MEASUREMENT SOFTWARE (OPTIONAL)



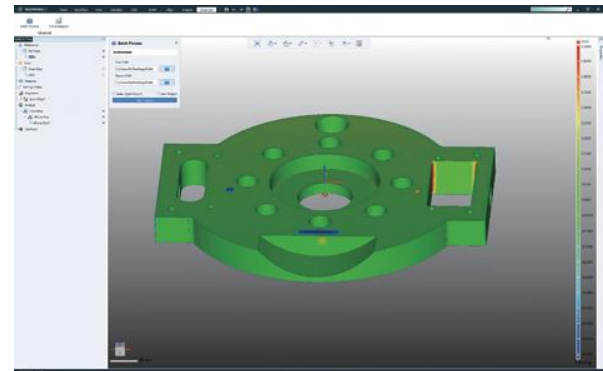
point cloud alignment



high-precision positioning



dimensional tolerance analysis



deviation analysis