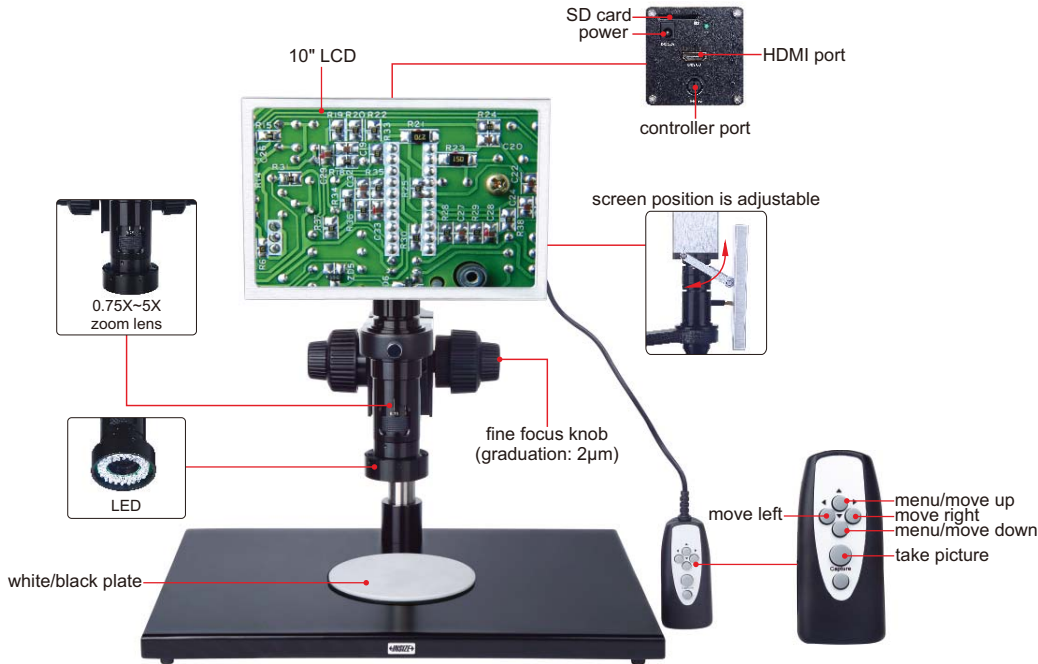


DIGITAL MICROSCOPE (WITH DISPLAY) CODE ISM-DL200



TAKE PICTURES



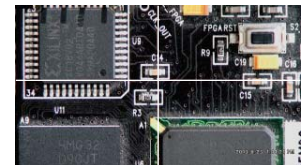
0.5X camera adapter (included)



1X auxiliary objective (included)



4G memory card and holder (included)



crosshair (white/black)

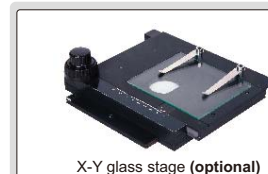
- Take pictures, saved to memory card
- Automatic white balance and exposure
- Brightness, contrast ratio, gain are adjustable



1X camera adapter (optional)



2X auxiliary objective (optional)



X-Y glass stage (optional)
(X-Y travel: 74×60mm)



SPECIFICATION

Magnification	18X~112X
Sensor	1/3" CMOS
Pixel	1.3M
Resolution	1280×800
Frame rate	60fps
Output	HDMI
Power supply	power adapter
Dimension (L×W×H)	400×300×430mm
Weight	6kg

OPTIONAL ACCESSORY

1X camera adapter	ISM-DL-CA1X
2X auxiliary objective	ISM-DL-OB2X
X-Y glass stage (travel: 74×60mm)	ISM-DL-STAGE

STANDARD DELIVERY

Main unit	1pc
0.5X camera adapter	1pc
1X auxiliary objective	1pc
4G memory card and holder	1pc
White/black plate	1pc
HDMI cable	1pc
Power adapter	1pc

MAGNIFICATION, FOCUS DISTANCE AND VIEW FIELD

Auxiliary Objective	Specification	Camera adapter	
		0.5X (included)	1X (optional)
1X (included)	Magnification	18~112X	36~224X
	Focus distance	70±2mm	70±2mm
	View filed	12.8×8.4~2×1.3mm	6.3×4.3~1×0.65mm
2X (optional)	Magnification	36~224X	72~448X
	Focus distance	29±2mm	29±2mm
	View filed	6.3×4.3~1×0.65mm	3.3×2~0.51×0.38mm