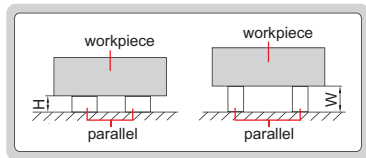
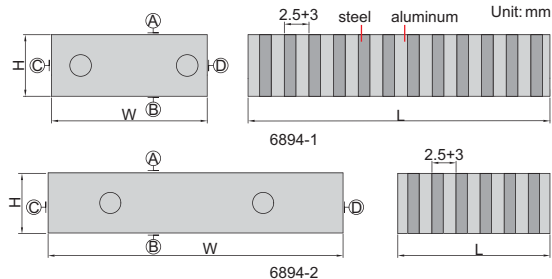


MAGNETIC INDUCTION PARALLEL SETS

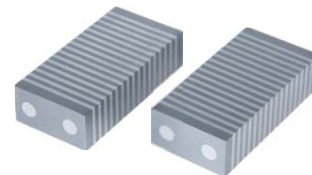
**ATTENTION:
NOT HARDENED SURFACE**



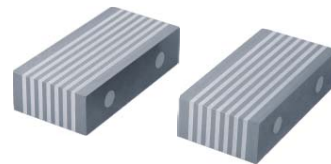
- To be used on magnetic chucks
- Two parallels per set
- Hardness HRB70



Code	Size (LxWxH)	Pole pitch	Parallelism between A and B	Parallelism between C and D	Height difference of a matched pair
6894-1	100x50x25mm	2.5+3mm	10μm	10μm	10μm
6894-2	50x100x25mm	2.5+3mm	10μm	10μm	10μm



6894-1



6894-2