

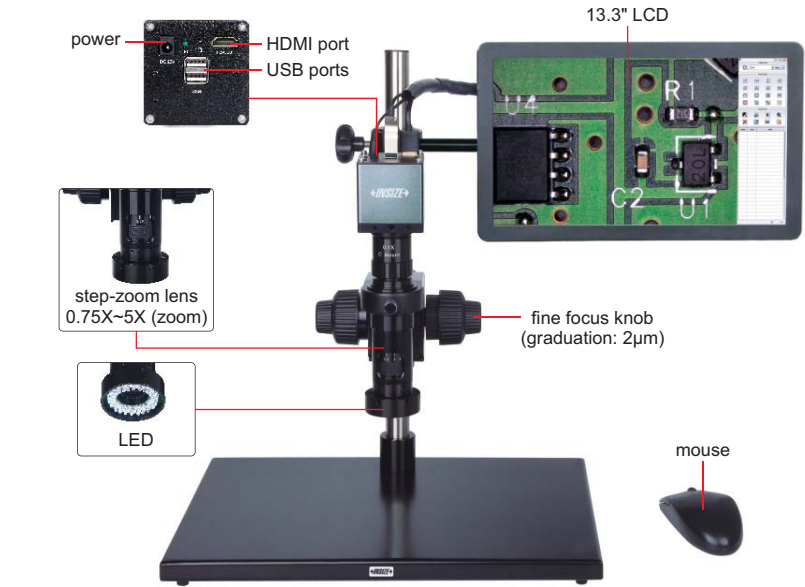
DIGITAL MEASURING MICROSCOPES (WITH DISPLAY)

BUILT-IN SOFTWARE
WITHOUT COMPUTER

MEASUREMENT

TAKE
PICTURES

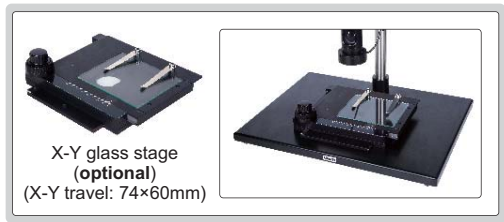
ATTENTION: PLEASE MAKE CONFOCAL ADJUSTMENT AFTER
CHANGING CAMERA ADAPTERS OR AUXILIARY OBJECTIVES



ISM-DL300 (without contour illumination)



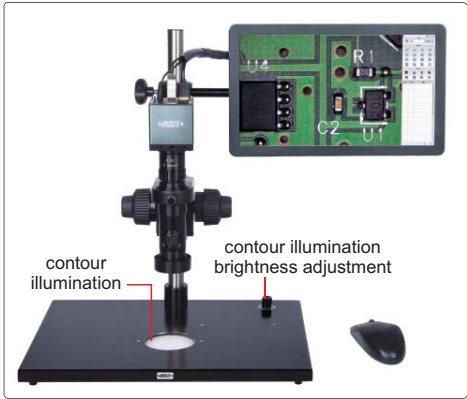
- 1080P high-definition image
- Built-in software without computer, operated by mouse
- Take pictures, save to USB flash disk
- Measurement results can be sent to Excel
- Automatic white balance and exposure
- Brightness, contrast ratio, gain are adjustable



SPECIFICATION

Code	ISM-DL300 (without contour illumination)	ISM-DL301** (with contour illumination)
Magnification	15X~100X	
Sensor	1/2" CMOS	
Pixel	2M	
Resolution	1920×1080	
Frame rate	60fps	
Output	HDMI	
Power supply	power adapter	power adapter and 220V, 50/60Hz**
Dimension (L×W×H)	570×300×430mm	
Weight	6.5kg	

** Add “-U” on code No. when power supply is 110V, 50/60Hz



ISM-DL301 (with contour illumination)



0.5X camera adapter
(included)



1X auxiliary objective
(included)



1X camera adapter
(optional)



calibration plate
(included)



16G USB flash disk
(included)



2X auxiliary objective
(optional)

STANDARD DELIVERY

Main unit	1 pc
0.5X camera adapter	1 pc
1X auxiliary objective	1 pc
Calibration plate	1 pc
16G USB flash disk	1 pc
White/black plate	1 pc
Mouse	1 pc
HDMI cable	1 pc
Power adapter	2 pcs

OPTIONAL ACCESSORY

1X camera adapter	ISM-DL-CA1X
2X auxiliary objective	ISM-DL-OB2X
X-Y glass stage (travel: 74×60mm)	ISM-DL-STAGE
X-Y metal stage	ISM-DL-STAGE1
LED auxiliary illumination	ISM-DL-LED
Coaxial light illumination	ISM-DL-COAXIAL
Auxiliary objective	page 258

To be continued

MEASURING ACCURACY

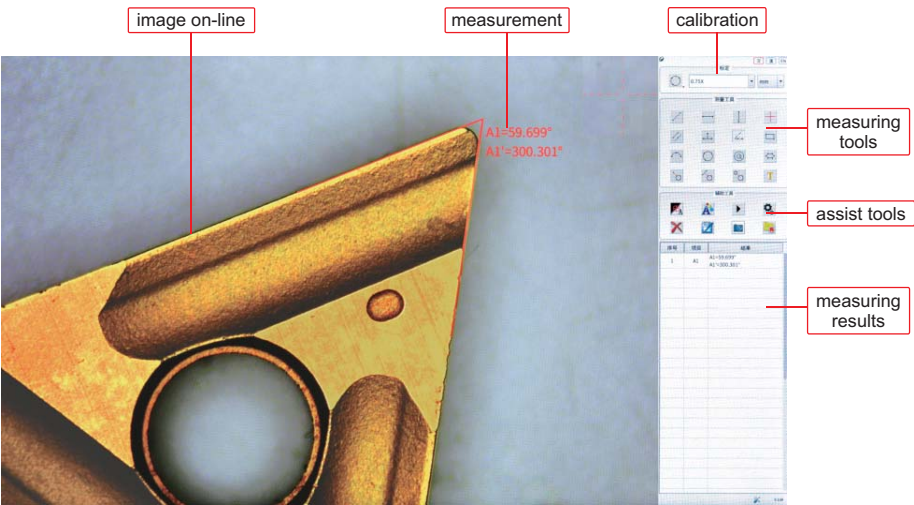
Objective magnification	Image magnification	Measuring accuracy
0.75X	15X	±8μm
1X	20X	±7μm
1.5X	30X	±6μm
2X	40X	±6μm
2.5X	50X	±6μm
3X	60X	±5μm
3.5X	70X	±5μm
4X	80X	±4μm
4.5X	90X	±4μm
5X	100X	±4μm

* When measuring the contour of workpieces, please use **ISM-DL301** to ensure accuracy.

MAGNIFICATION, FOCUS DISTANCE AND VIEW FIELD

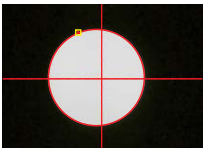
Auxiliary objective	Specification	Camera adapter	
		0.5X (included)	1X (optional)
1X (included)	Magnification	15~100X	30~200X
	Focus distance	70±2mm	70±2mm
	View filed	16×11~2.5×1.6mm	7.8×5.3~1.2×0.8mm
2X (optional)	Magnification	30~200X	60~400X
	Focus distance	29±2mm	29±2mm
	View filed	7.8×5.3~1.2×0.8mm	3.8×2.7~0.6×0.4mm

SOFTWARE

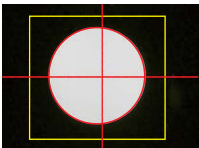


- Language: English
- Output to Excel
- Edge-detection:

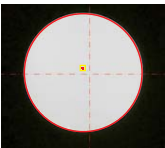
Point tool



Box tool



Click tool



■ Measurement tools:

- measure length of line or distance between two points
- measure angle from horizontal line
- measure distance between two parallel lines
- measure distance between point and line
- measure radius, diameter, girth and area of circle with three points
- measure minimum distance between point and circle
- measure minimum distance between line and circle
- measure minimum distance between two circles
- add text

- measure length of line or distance between two points in horizontal direction
- measure angle from vertical line
- measure distance between three parallel lines
- measure radius, length and angle of arc
- measure radius, diameter, girth and area concentric of circles
- measure distance between point and center of circle
- measure distance between line and center of circle
- measure center distance between two circles
- measure radius, diameter, girth and area of circle with two points

- measure length of line or distance between two points in vertical direction
- measure angle of two lines
- measure distance between multiple parallel lines
- measure girth and area of polygon
- measure length, width, girth and area of rectangle
- measure maximum distance between point and circle
- measure maximum distance between line and circle
- measure maximum distance between two circles
- cross hair