

DATA OUTPUT

- Measure velocity, flow, temperature and relative humidity
- Velocity unit: m/s, km/h, mil/h, ft/m, ft/s, knots
- Flow unit: CMS (cubic meter per second), CMM (cubic meter per minute), CFM (cubic feet per minute)
- Temperature type: ambient, dew point, wet bulb
- Maximum and minimum modes
- Automatic power off



VIDEO



software CD (included)

**DIGITAL ANEMOMETER
CODE 9331-40**

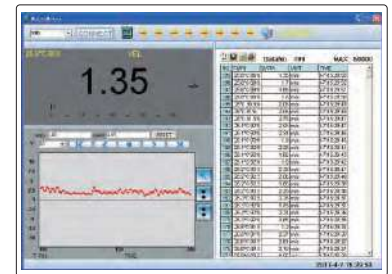


SPECIFICATION

| | | |
|--------------------------|----------------------|---|
| Measuring range | velocity | 0.8~30m/s, 1.4~108km/h, 0.9~67.2mil/h, 1.3~98.5ft/s, 78~5900ft/m, 0.8~58.3knots |
| | flow | 0~9999CMS, 0~99990CMM, 0~99990CFM |
| | temperature | -20~60°C/-4~140°F |
| | relative humidity | 0~100%RH |
| Accuracy | velocity | ±(2%+0.5) for m/s, km/h, mil/h, ft/s, knots ±(2%+50) for ft/m |
| | temperature | ±1.5°C/±2.7°F |
| | relative humidity | ±3% (20~80%RH), ±5% (<20%RH or >80%RH) |
| Resolution | velocity | 0.01m/s, 0.01km/h, 0.01mil/h, 0.01ft/s, 1ft/m, 0.01knots |
| | flow | 0.01CMS, 0.1CMM, 0.1CFM |
| | temperature | 0.1°C/0.1°F |
| | relative humidity | 0.1%RH |
| Flowing area range | 0~9.999m²/0~9.999ft² | |
| Sampling time | 0.4s | |
| Maximum working altitude | 2000m | |
| Output | USB | |
| Power supply | 9V battery | |
| Dimension | 165×85×38mm | |
| Weight | 200g | |

STANDARD DELIVERY

| | |
|------------------------|------|
| Main unit | 1 pc |
| USB cable and software | 1 pc |
| 9V battery | 1 pc |



software (included), display measurement values and graph, save and output data

- Suitable for wood, smooth cement, hard gypsum, mixed mortar, brick, etc.
- Measure moisture, temperature and relative humidity
- Temperature type: ambient, dew point, wet bulb
- Maximum and minimum modes
- Automatic power off



VIDEO

**DIGITAL MOISTURE METER
CODE 9341-50**



cover (included)

SPECIFICATION

| | | |
|-----------------|---|-------------------|
| Measuring depth | 0~50mm | |
| Measuring range | Moisture | 0~60% |
| | temperature | -10~50°C/14~122°F |
| | relative humidity | 0~100%RH |
| Accuracy | Moisture | ±2% |
| | temperature | ±2% |
| | relative humidity | ±5%RH |
| Resolution | Moisture | 0.1% |
| | temperature | 0.1°C/0.1°F |
| | relative humidity | 0.1%RH |
| Sampling time | 0.5s for moisture 1s for temperature and relative humidity | |
| Power supply | 2×AAA batteries | |
| Dimension | 130×56×29mm | |
| Weight | 206g | |

STANDARD DELIVERY

| | |
|---------------|-------|
| Main unit | 1 pc |
| Battery (AAA) | 2 pcs |